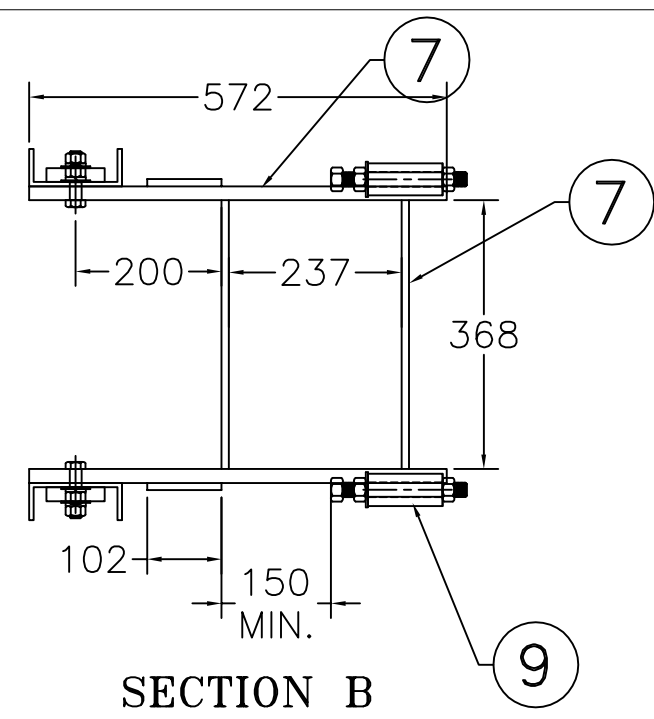


SECTION A



SECTION B

#	QTY.	MATERIAL	DESCRIPTION
1	25	ALUMINUM 5052-H32	4 HOLE PERFORATED RUNG (F & L) 2 1/4"W X 1 19/32"H
2	6	ALUMINUM 6061-T6	127 X 51 CHANNEL (ALCAN 23018)
3	4	ALUMINUM 6061-T6	19MM X 80 X 490 LG. SPLICE BRACKET
4	22	STAINLESS STEEL 304	5/8 X 2 1/2 HEX BOLT C/W NUT, FLAT AND LOCK WASHER
5	2	ALUMINUM 6061-T6	64 x 10mm x 102 LG. F.B
6	4	ALUMINUM 6061-T6	102 X 10MM X F.B
7	4	ALUMINUM 6061-T6	19MM X 195 PLATE
8	2	ALUMINUM 6061-T6	44MM SOLID ROD C/W 20MM THRU HOLE
9	2	STAINLESS STEEL 304	3/4 X THREADED ROD 365MM LONG C/W WELDED NUT ON ONE END
10	2	STAINLESS STEEL 304	2 - 5/8 NUTS 2 - FLATS AND LOCK WASHERS

THIS DOCUMENT CONTAINS PROPRIETARY INFORMATION AND OTHER RIGHTS WHICH ARE THE SOLE AND EXCLUSIVE PROPERTY OF MSU MISSISSAUGA LTD.

POSSESSION OF THIS MATERIAL DOES NOT CONVEY OR TRANSFER ANY RIGHTS THEREIN, AND REPRODUCTION, USE, COPYING OR DISCLOSURE TO OTHERS IS FORBIDDEN WITHOUT THE PRIOR WRITTEN CONSENT OF AN OFFICER OF MSU MISSISSAUGA LTD.

© MSU MISSISSAUGA LTD. - JULY 23RD, 2014

- NOTE: 1) ALL ALUMINUM SURFACES IN CONTACT WITH CONCRETE SHALL RECEIVE 2 COATS OF BITUMINOUS PAINT.
 2) WELDING SHALL CONFORM TO CSA W47.2-R2008 CSA W59.2-R2008
 3) GROUND ROUGH EDGES SMOOTH. WELDED SURFACES REMAIN AS WELDED.
 4) BOLT THREADS ARE TO BE EXCLUDED FROM SHEAR PLANES. MIN. UTS FOR BOLTS TO BE 520 MPA.
 5) RUNGS TO RAIL WELDS TO B 3MM FILLET ALL AROUND. ALL OTHER WELDS TO BE 6MM FILLETS ALL AROUND WHERE POSSIBLE.

PROJECT	LOCATION PROJECT	
CONTRACTOR	CONTRACTOR	
ARCHT/ENGR	ENGINEER	
QTY.	1	PROJECT NO. #

TITLE					
ALUMINUM ACCESS LADDER					
NO.	DATE	BY	DATE	DWG. BY:	PLNO.
1			##/##/##	SCJ	CATA
			SCALE	DWC. NO. ISGCHANNEL	
			NTS		