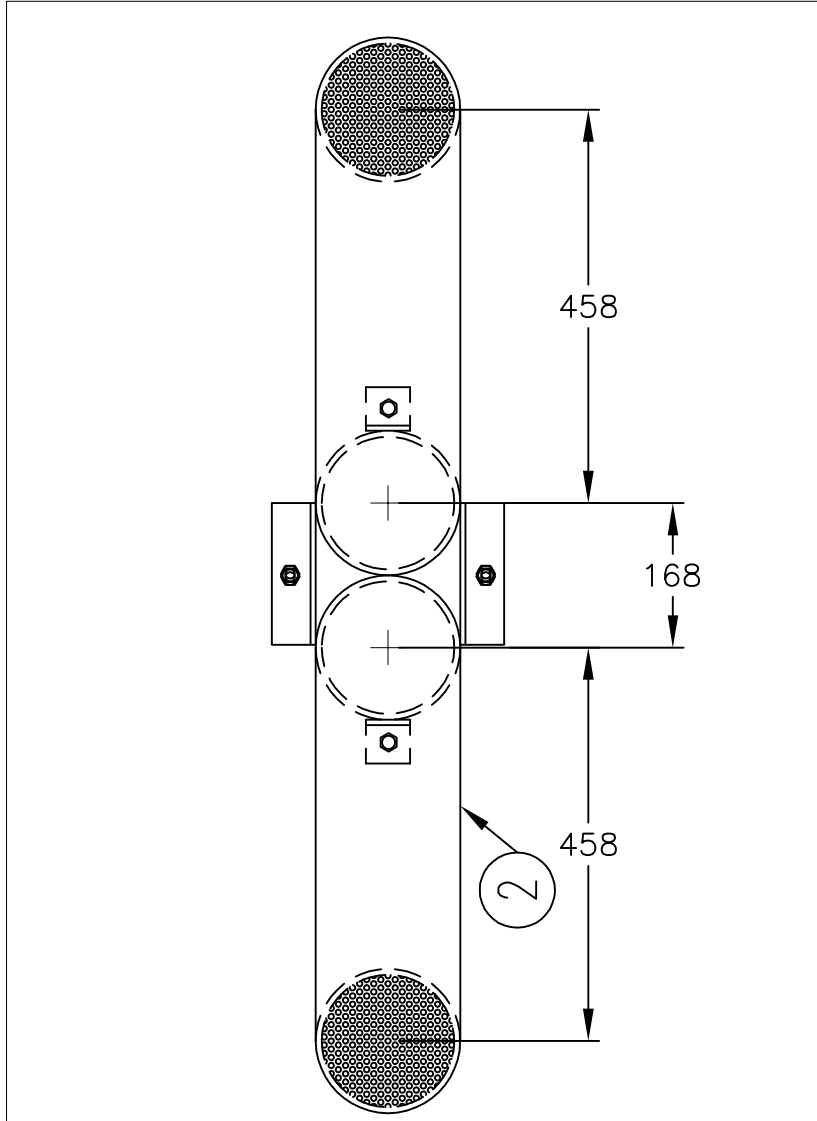


SIDE VIEW



PLAN VIEW

#	QTY.	MATERIAL	DESCRIPTION
1	2	STAINLESS STEEL 304	6" SCH 10 PIPE (168mm O.D)
2	4	STAINLESS STEEL 304	6" SCH 10 LONG RADIUS ELBOWS (168mm O.D)
3	2	STAINLESS STEEL 304	BIRD SCREEN 3mm WIRE 1/4" OPEN
4	4	STAINLESS STEEL 304	51x51x6mm ANGLE BRACKET WELD TO ITEM #1
5	4	STAINLESS STEEL 304	16ø X 152mm HILTI K.B. II ANCHOR C/W NUT FLAT AND LOCK WASHER

THIS DOCUMENT CONTAINS PROPRIETARY INFORMATION AND OTHER RIGHTS WHICH ARE THE SOLE AND EXCLUSIVE PROPERTY OF MSU MISSISSAUGA LTD.

POSSESSION OF THIS MATERIAL DOES NOT CONVEY OR TRANSFER ANY RIGHTS THEREIN, AND REPRODUCTION, USE, COPYING OR DISCLOSURE TO OTHERS IS FORBIDDEN WITHOUT THE PRIOR WRITTEN CONSENT OF AN OFFICER OF MSU MISSISSAUGA LTD.

© MSU MISSISSAUGA LTD. - JULY 23RD, 2014

NOTE:

- 1) WELDING SHALL CONFORM TO CSA W47.1 & AWS D1.6
- 2) WELDED SURFACES REMAIN AS WELDED.

PROJECT	LOCATION PROJECT	
CONTRACTOR	CONTRACTOR	
ARCHT/ENGR	ENGINEER	
QTY.	2	PROJECT NO. #

TITLE						6" SCH. 10 (168mm O.D.)	
STAINLESS STEEL 304 DOUBLE VENT PIPE							
REVISION	NO.	DATE	BY	DATE	DWG. BY:	PLNO.	
▲				##/##/##	SCJ	CATA	
▲				SCALE	CHK'D BY:	DWG. NO.	
				NTS		VENT-4	