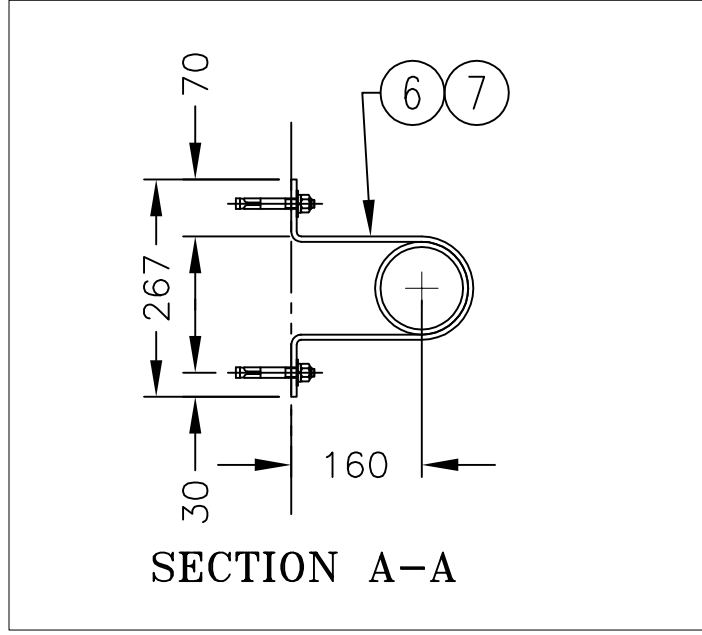


PLAN VIEW



SECTION A-A

#	QTY.	MATERIAL	DESCRIPTION
1	1	STAINLESS 304 STEEL	4" SCH 10 PIPE (114mm O.D)
2	2	STAINLESS 304 STEEL	4" SCH 10 LONG RADIUS ELBOWS (114mm O.D)
3	1	STAINLESS STEEL	INSECT SCREEN PERFORATED PLATE
4	5	STAINLESS 304 STEEL	5mm THK. PLATE - FLANGE AND GUSSETS
5	1	BLACK NEOPRENE	3.2mm THK. NEOPRENE U/S VENT PIPE FLANGE
6	4	STAINLESS STEEL 304	12φ X 95mm WEDGE ANCHOR C/W NUT FLAT AND LOCK WASHER

THIS DOCUMENT CONTAINS PROPRIETARY INFORMATION AND OTHER RIGHTS WHICH ARE THE SOLE AND EXCLUSIVE PROPERTY OF MSU MISSISSAUGA LTD.

POSSESSION OF THIS MATERIAL DOES NOT CONVEY OR TRANSFER ANY RIGHTS THEREIN, AND REPRODUCTION, USE, COPYING OR DISCLOSURE TO OTHERS IS FORBIDDEN WITHOUT THE PRIOR WRITTEN CONSENT OF AN OFFICER OF MSU MISSISSAUGA LTD.

© MSU MISSISSAUGA LTD. - JULY 23RD, 2014

NOTE:

- 1) WELDING SHALL CONFORM TO CSA W47.1 & CSA W59
- 2) WELDED SURFACES REMAIN AS WELDED.

PROJECT	LOCATION PROJECT
CONTRACTOR	CONTRACTOR
ARCHT/ENG'R	ENGINEER
QTY. 1	PROJECT NO. #

TITLE		4" SCH. 10 (114mm O.D) STAINLESS STEEL 304 VENT PIPE	
NO.	DATE	BY	DATE
1		SCJ	###/###/###
REVISION	SCALE	DWG. BY	PL.NO.
	NTS	SCJ	CATA
		CHK'D BY	DWG. NO.
			VENT-3