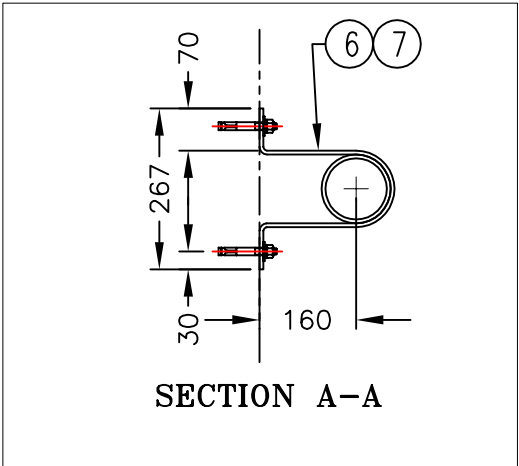


**PLAN VIEW**



**SECTION A-A**

| # | QTY.     | MATERIAL            | DESCRIPTION  |
|---|----------|---------------------|--|
| 1 | 1        | ALUMINUM 6061-T6    | 4" SCH 40 PIPE (114mm O.D)                           |
| 2 | 2        | ALUMINUM 6061-T6    | 4" SCH 40 LONG RADIUS ELBOWS (114mm O.D)             |
| 3 | 1        | ALUMINUM 6061-T6    | BIRD SCREEN 5mm WIRE 1/4" OPEN                       |
| 4 | 5        | ALUMINUM 6061-T6    | 6mm THK. PLATE - FLANGE AND GUSSETS                  |
| 5 | 1        | BLACK NEOPRENE      | 3.2mM THK. NEOPRENE U/S VENT PIPE FLANGE             |
| 6 | AS REQ'D | STAINLESS STEEL 304 | 12# X 95mm WEDGE ANCHOR C/W NUT FLAT AND LOCK WASHER |
| 7 | 3        | STAINLESS STEEL 304 | 51X6mm THK. FORMED FLAT BAR BRACKET                  |

THIS DOCUMENT CONTAINS PROPRIETARY INFORMATION AND OTHER RIGHTS WHICH ARE THE SOLE AND EXCLUSIVE PROPERTY OF MSU MISSISSAUGA LTD.

POSSESSION OF THIS MATERIAL DOES NOT CONVEY OR TRANSFER ANY RIGHTS THEREIN, AND REPRODUCTION, USE, COPYING OR DISCLOSURE TO OTHERS IS FORBIDDEN WITHOUT THE PRIOR WRITTEN CONSENT OF AN OFFICER OF MSU MISSISSAUGA LTD.

© MSU MISSISSAUGA LTD. - JULY 23RD, 2014

- NOTE: 1) ALL ALUMINUM SURFACES IN CONTACT WITH CONCRETE SHALL RECEIVE 2 COATS OF BITUMINOUS PAINT.  
 2) WELDING SHALL CONFORM TO CSA W47.2 CSA W59.2  
 3) WELDED SURFACES REMAIN AS WELDED.

| LOCATION PROJECT |                   |
|------------------|-------------------|
| CONTRACTOR       | <b>CONTRACTOR</b> |
| ARCHT/ENGR       | <b>ENGINEER</b>   |
| QTY.             | <b>1 EACH</b>     |
| PROJECT NO.      | <b>#</b>          |

| TITLE  |      |    |          |          |         |
|--|------|----|----------|----------|---------|
| <b>4" SCH. 40 (114mm O.D) ALUMINUM VENT PIPE</b> |      |    |          |          |         |
| NO.  | DATE | BY | DATE     | DWG. BY  | PL. NO. |
|  |      |    | ##/##/## | SCJ      | CATA    |
| SCALE  | NTS  |    |          | DWG. NO. | VENT-1  |