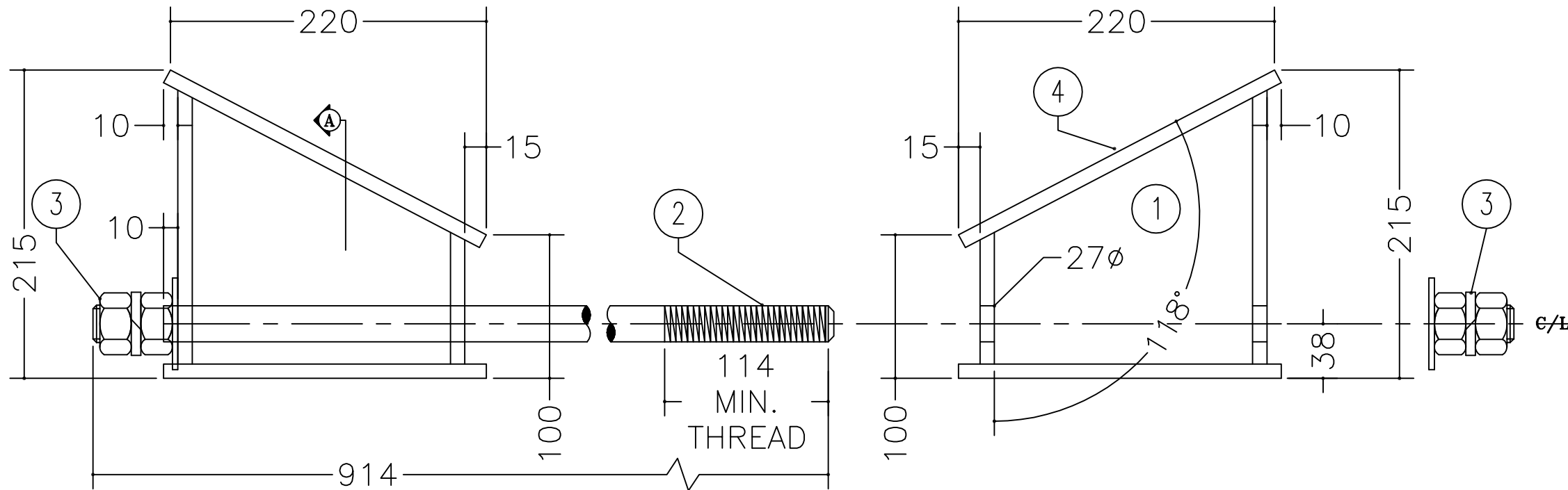
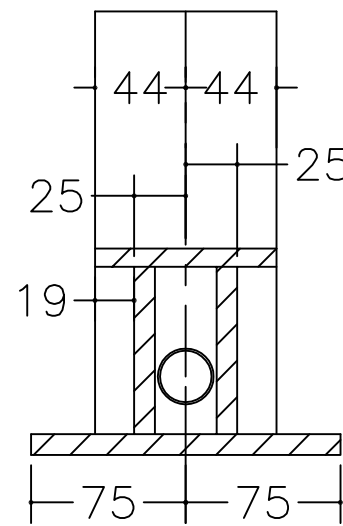


#	QTY.	MATERIAL	DESCRIPTION
1	AS REQ.	GALVANIZED STEEL	10mm PLATE
2	1	GALVANIZED STEEL	25mm ϕ THREADED ROD WELDED TO ITEM#1 ONE SIDE
3	1	STAINLESS STEEL 304	25 ϕ MM NUT, FLAT & LOCK WASHER



SECTION A



THIS DOCUMENT CONTAINS PROPRIETARY INFORMATION AND OTHER RIGHTS WHICH ARE THE SOLE AND EXCLUSIVE PROPERTY OF MSU MISSISSAUGA LTD.

POSSESSION OF THIS MATERIAL DOES NOT CONVEY OR TRANSFER ANY RIGHTS THEREIN, AND REPRODUCTION, USE, COPYING OR DISCLOSURE TO OTHERS IS FORBIDDEN WITHOUT THE PRIOR WRITTEN CONSENT OF AN OFFICER OF MSU MISSISSAUGA LTD.

© MSU MISSISSAUGA LTD. - JULY 23RD, 2014

NOTE:

- 1) WELDING SHALL CONFORM TO CSA W47.1 CSA W59
- 2) WELDED SURFACES REMAIN AS WELDED.
- 3) ALL STEEL SHALL BE HOT-DIP GALVANIZED AFTER FABRICATION IN CONFORMANCE WITH CSA G-164.
- 4) FABRICATOR TO PROVIDE 6mm DIA. HOLES TO PERMIT GASES TO ESCAPE DURING GALVANIZING.

PROJECT	LOCATION PROJECT
CONTRACTOR	CONTRACTOR
ARCHT/ENG'R	ENGINEER
CITY.	#
PROJECT NO.	#

TITLE					
GALVANIZED VALVE SUPPORT					
NO.	DATE	BY	DATE	DWG. BY:	PL. NO.
1			##/##/##	SCJ	CATA
2			SCALE	DWG. NO.	VALVE
			NTS		