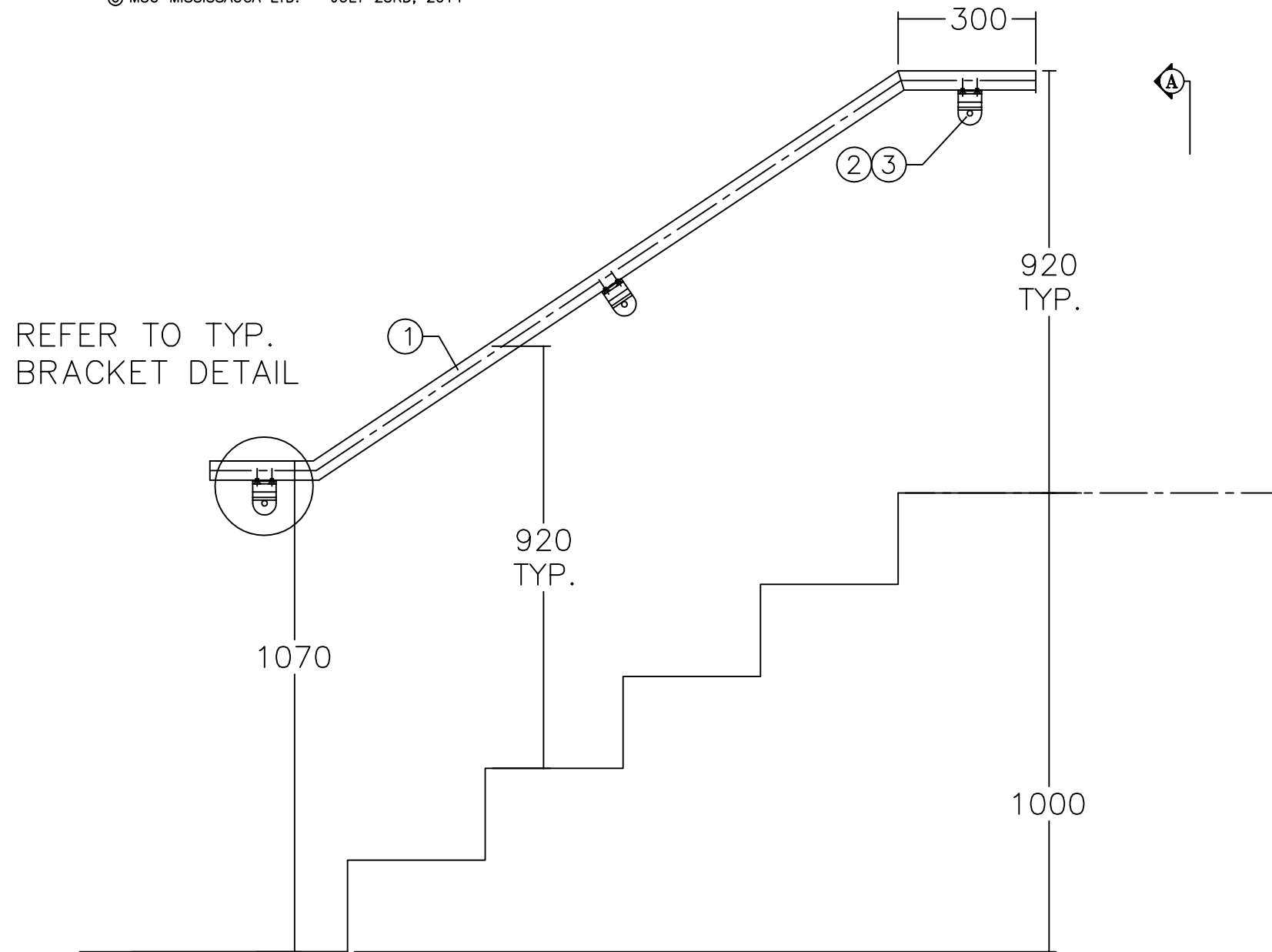


THIS DOCUMENT CONTAINS PROPRIETARY INFORMATION AND OTHER RIGHTS WHICH ARE THE SOLE AND EXCLUSIVE PROPERTY OF MSU MISSISSAUGA LTD.

POSSESSION OF THIS MATERIAL DOES NOT CONVEY OR TRANSFER ANY RIGHTS THEREIN, AND REPRODUCTION, USE, COPYING OR DISCLOSURE TO OTHERS IS FORBIDDEN WITHOUT THE PRIOR WRITTEN CONSENT OF AN OFFICER OF MSU MISSISSAUGA LTD.

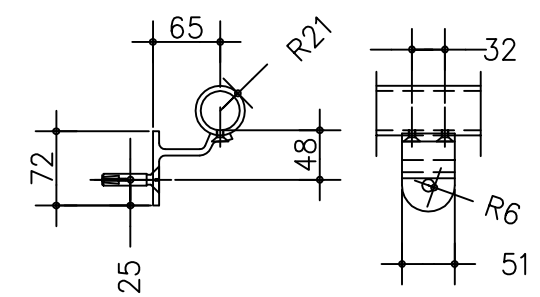
© MSU MISSISSAUGA LTD. - JULY 23RD, 2014



REFER TO TYP. BRACKET DETAIL

MSU
MISSISSAUGA LTD.
PHONE: (905) 823-4340
WATTS: (800) 268-5336
WEBSITE: www.msumississauga.com

#	QTY.	MATERIAL	DESCRIPTION
1	2	ALUMINUM 6061-T6	1 1/4" SCH.40 PIPE
2	3	ALUMINUM 6061-T6	RAILING STANCHION
3	3	STAINLESS STEEL 304	3/8 X 3 3/4" WEDGE ANCHORS C/W NUT, FLAT & LOCK WASHERS



SECTION A WALL MOUNT DETAILS

- NOTE:
- 1) WELDING SHALL CONFORM TO CSA W47.2 CSA W59.2
 - 2) WELDED SUFACES GROUND SMOOTH
 - 3) CONTRACTOR TO CONFIRM ALL DIMENSIONS SHOWN. FIELD MEASURE STAIRS FOR RISE AND RUN ACTUAL.
 - 4) CLEAR SATIN ANODIZED FINISH (OPTIONAL)

PROJECT	LOCATION PROJECT	
CONTRACTOR	CONTRACTOR	
ARCHT/ENGR	ENGINEER	
QTY.	1	PROJECT NO. #

TITLE						STAIR HAND RAILING SYSTEM WALL MOUNT	
REVISION	NO.	DATE	BY	DATE	DWG. BY:	NO.	DWG. NO.
▲				###/###/###	SCJ	CATA	
				SCALE	NTS	DWG. NO.	RAIL-2