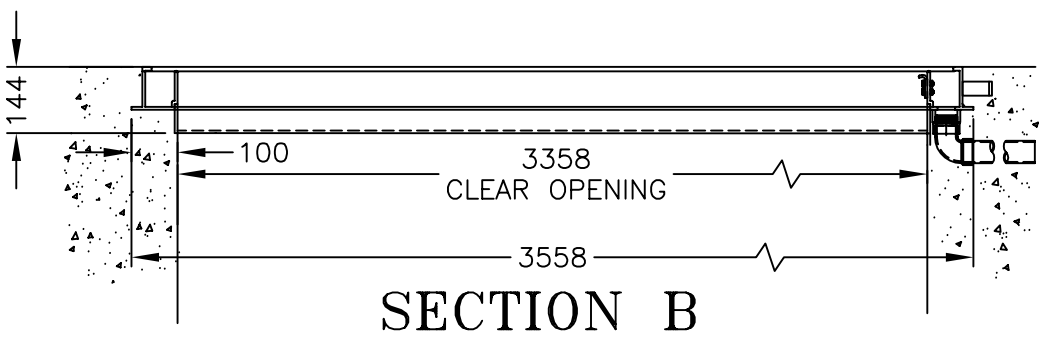
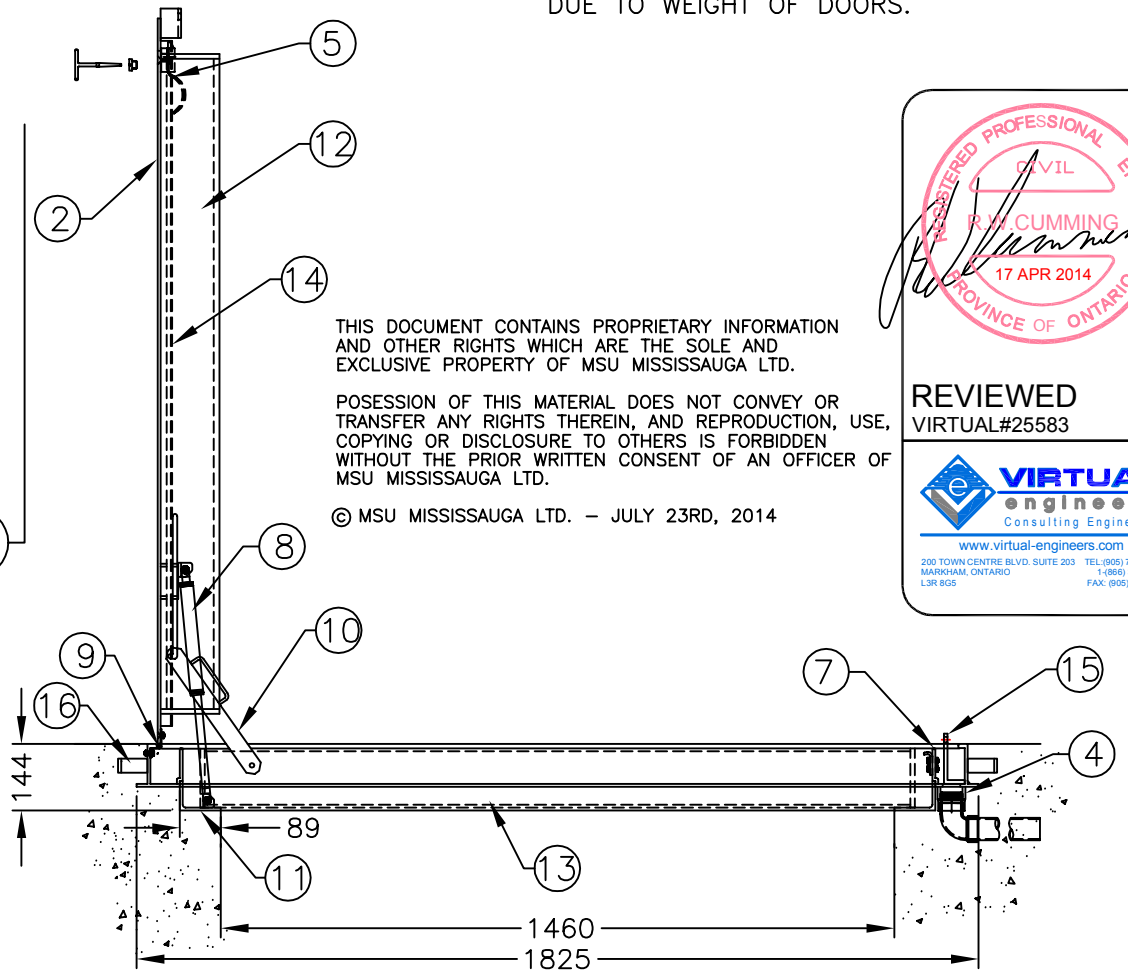
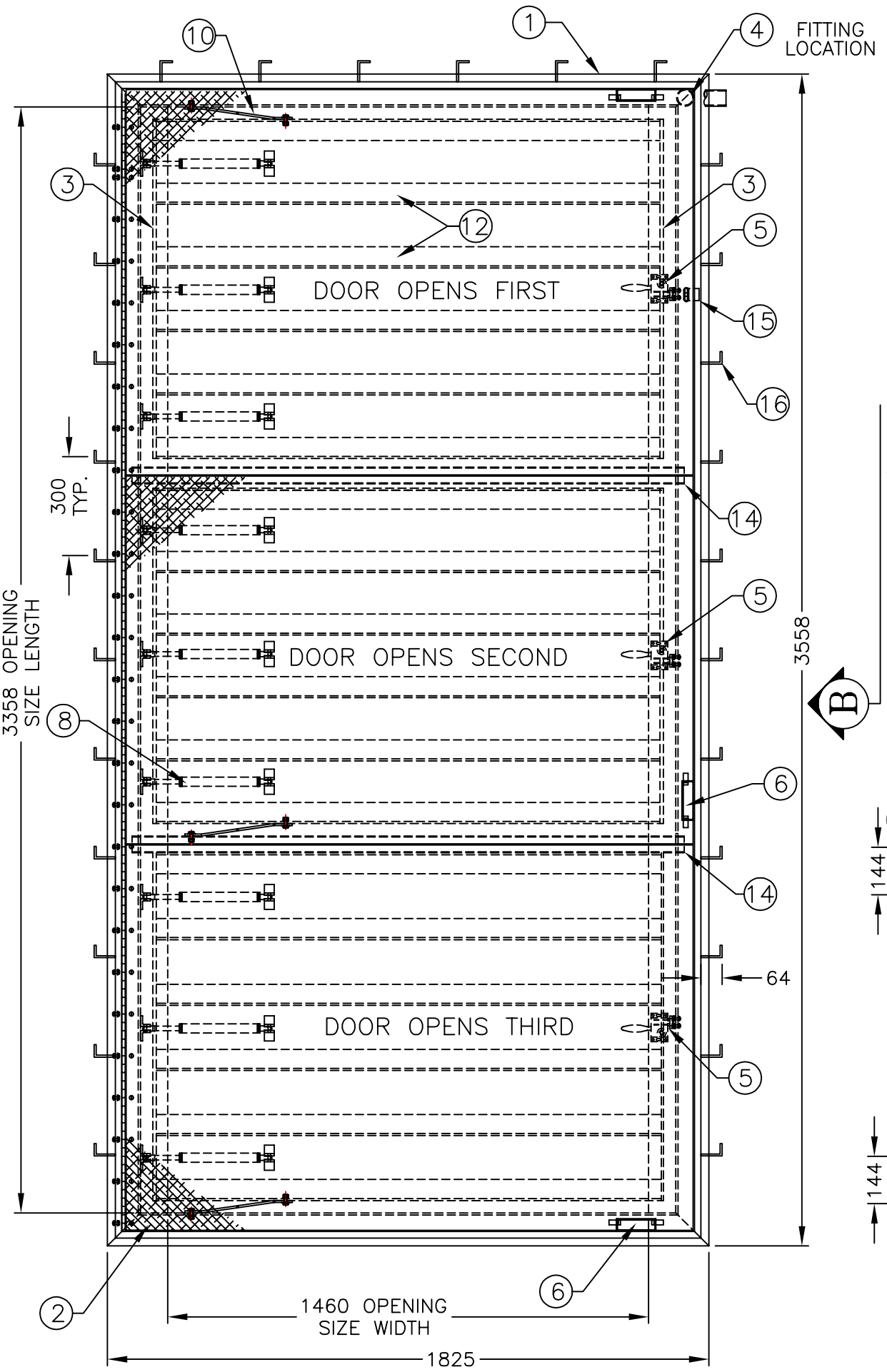


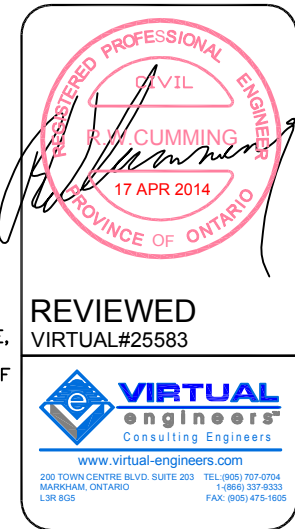
- NOTE:
1. ALL ALUMINUM SURFACES IN CONTACT WITH CONCRETE SHALL RECEIVE 2 COATS OF BITUMINOUS PAINT.
 2. WELDING SHALL CONFORM TO CSA 47.2 & CSA W59.2
 3. WELDED SURFACES REMAIN AS WELDED.
 4. HATCH IS DESIGNED WITH A CL-625-ONT WHEEL LOAD PER CLAUSE 3.8.4.3(a) OF CAN/CSA-S6-06, AND INCLUDES AN IMPACT FACTOR OF 15% FOR AN OFF HIGHWAY LOCATION
 5. ALL FASTENERS ARE 316 STAINLESS STEEL.
 6. NUMBER OF GAS CYLINDERS MAY VARY DUE TO WEIGHT OF DOORS.



THIS DOCUMENT CONTAINS PROPRIETARY INFORMATION AND OTHER RIGHTS WHICH ARE THE SOLE AND EXCLUSIVE PROPERTY OF MSU MISSISSAUGA LTD.

POSSESSION OF THIS MATERIAL DOES NOT CONVEY OR TRANSFER ANY RIGHTS THEREIN, AND REPRODUCTION, USE, COPYING OR DISCLOSURE TO OTHERS IS FORBIDDEN WITHOUT THE PRIOR WRITTEN CONSENT OF AN OFFICER OF MSU MISSISSAUGA LTD.

© MSU MISSISSAUGA LTD. - JULY 23RD, 2014



#	QTY.	MATERIAL	DESCRIPTION
1	4	ALUMINUM 6351-T6	FRAME EXTRUSION #P5709-1
2	3	ALUMINUM 6061-T6	6MM TREAD PLATE
3	6	ALUMINUM 6061-T6	127X10mm FLAT BAR
4	1	ALUMINUM 6061-T6	1-1/2" NOM. PIPE HALF-COUPLING C/W 1-1/2" ABS ADAPTER/ELBOW
5	3	ALUMINUM 6061-T6	SLAM LOCK C/W ALUM. REMOVEABLE SEALING PLUG AND OPENING TOOL
6	3	ALUMINUM 6061-T6	FLUSH LIFT HANDLE
7	1	BLACK CORD NEOPRENE	PERIMETER SEALING GASKET
8	9	PAINTED STEEL	GAS SPRING ASSIST CYLINDER C/W ALUM. MOUNTING BRACKETS
9	3	STAINLESS STEEL 316	CONTINUOUS FORMED HINGE C/W 1/4" TAMPERPROOF FASTENERS
10	3	STAINLESS STEEL 316	90 DEG. HOLD OPEN ARM C/W 1/4"Ø ROD FORMED HANDLE
11	2	ALUMINUM 6061-T6	ANGLE 64 X 89 X 6mm
12	18	ALUMINUM 6061-T6	CHANNEL 127X64X6mm SUPPORT
13	2	ALUMINUM 6061-T6	64 X 6mm FLAT BAR
14	2	ALUMINUM 6061-T6	2 X 1 X 1/8" DRIP CHANNEL
15	1	ALUMINUM 6061-T6	LOCK TAB
16	28	ALUMINUM 6061-T6	CAST ANCHOR 1/4X1 1/2 2 1/2" OFFSET, 1" LEG

INSTALLATION INSTRUCTIONS:

1. GAS CYLINDERS HAVE BEEN SUPPLIED SEPARATELY, IT IS VERY IMPORTANT TO INSTALL CYLINDERS (ITEM #8) AFTER CONCRETE HAS CURED

PROJECT	LOCATION PROJECT
CONTRACTOR	CONTRACTOR
ARCHT/ENGR	ENGINEER
QTY. 1	PROJECT NO. #

TITLE MSU MT-CL625 ALUM. ACCESS HATCH FOR 1460 X 3358mm CLEAR OPENING					
NO.	DATE	BY	DATE	DWG. BY:	PLN. NO.
1		SCJ		SCJ	CATA
SCALE NTS				DWG. NO.	MCL-625-3