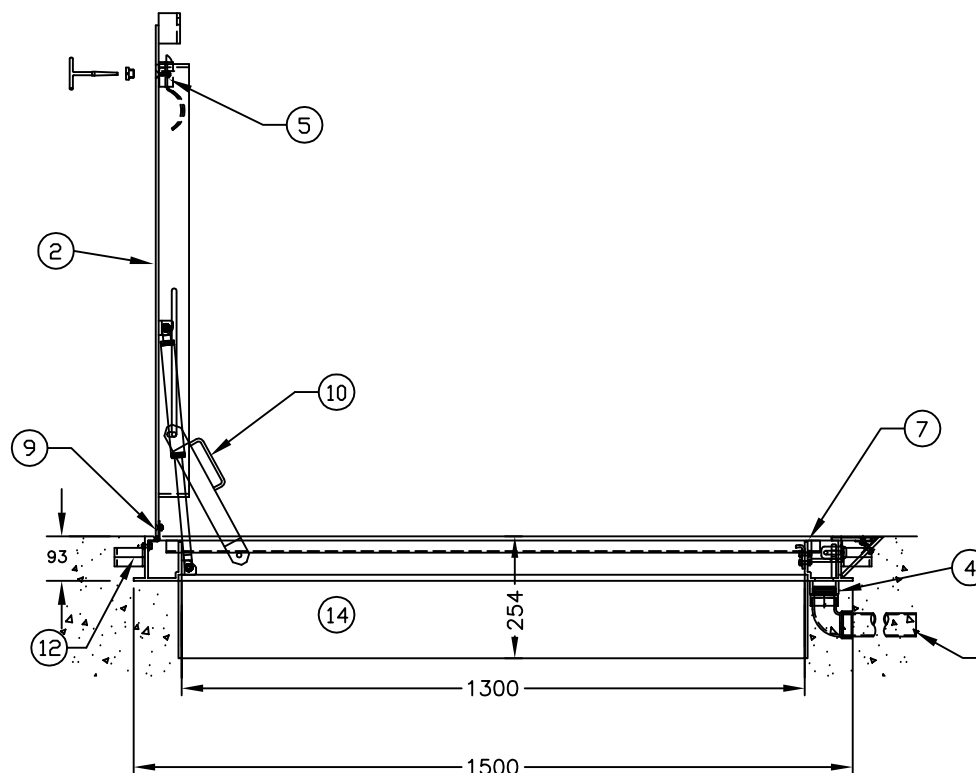
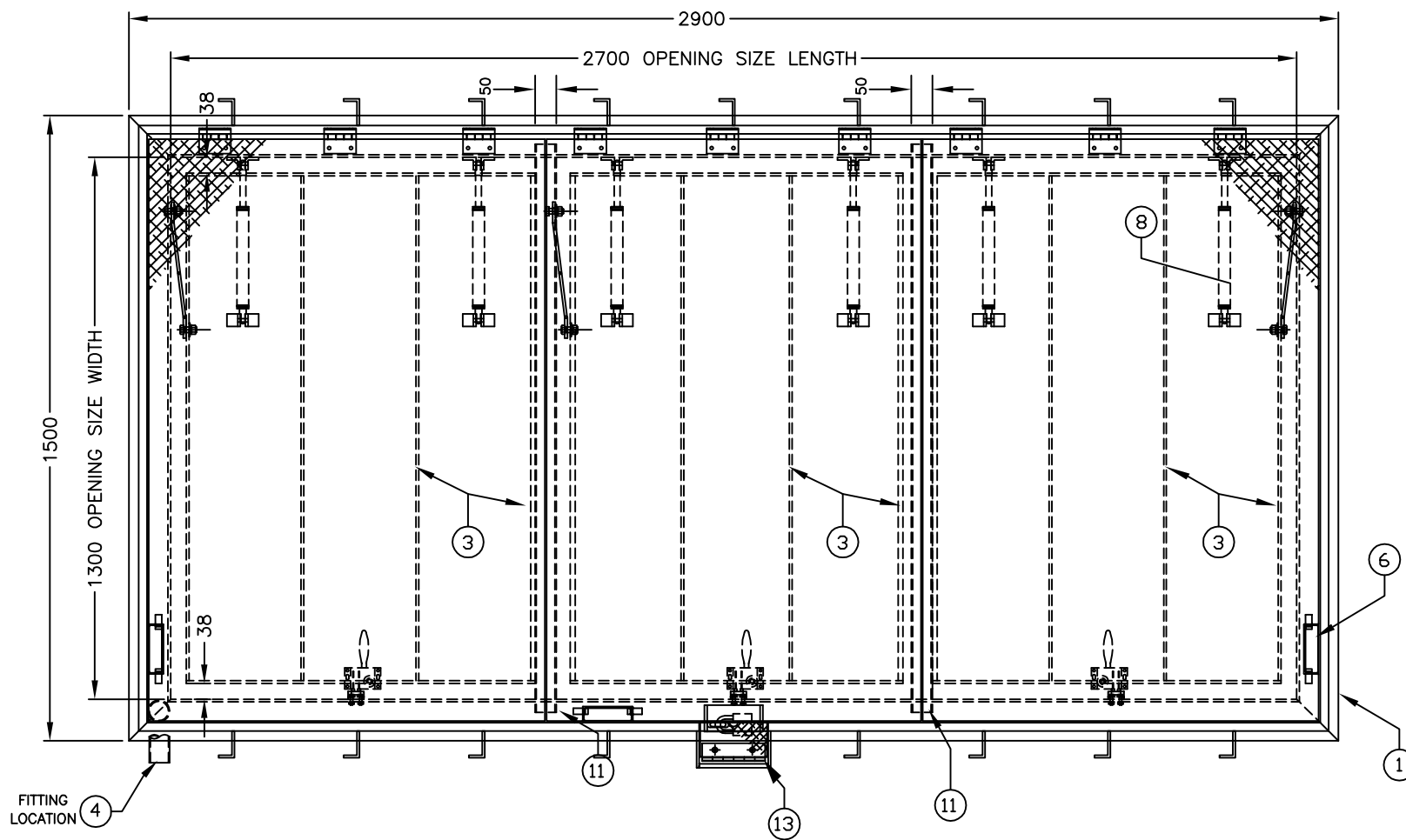


**MSU  
MISSISSAUGA LTD.**

PHONE: (905) 823-4340

WATTS: (800) 268-5336

WEBSITE: www.msmississauga.com



**EACH END DOOR WILL OPEN  
IN CONJUNCTION WITH THE  
MIDDLE DOOR. SPECIFY IF  
OTHERWISE.**

THIS DOCUMENT CONTAINS PROPRIETARY INFORMATION  
AND OTHER RIGHTS WHICH ARE THE SOLE AND  
EXCLUSIVE PROPERTY OF MSU MISSISSAUGA LTD.

POSSESSION OF THIS MATERIAL DOES NOT CONVEY OR  
TRANSFER ANY RIGHTS THEREIN, AND REPRODUCTION, USE,  
COPYING OR DISCLOSURE TO OTHERS IS FORBIDDEN  
WITHOUT THE PRIOR WRITTEN CONSENT OF AN OFFICER OF  
MSU MISSISSAUGA LTD.

© MSU MISSISSAUGA LTD. - JULY 23RD, 2014

**WEIGHT IS 400#**

#	QTY.	MATERIAL	DESCRIPTION
1	4	ALUMINUM 6351-T6	FRAME EXTRUSION #P-5709-1
2	3	ALUMINUM 6061-T6	1/4" TREAD PLATE
3	18	ALUMINUM 6061-T6	89X6mm FLAT BAR REINFORCING
4	1	ALUMINUM 6061-T6	1 1/2" NOM. PIPE HALF-COUPLING C/W 1 1/2" ABS ADAPTER/ELBOW
5	3	STAINLESS STEEL 316	SLAM LOCK C/W ALUM. REMOVABLE SEALING PLUG AND OPENING TOOL
6	3	ALUMINUM 6061-T6	FLUSH LIFT HANDLE
7	4	BLACK CORD NEOPRENE	PERIMETER SEALING GASKET
8	6	STAINLESS STEEL 316	GAS SPRING ASSIST CYLINDER C/W ALUM. MOUNTING BRACKETS
9	9	STAINLESS STEEL 316	FORMED BUTT HINGE C/W 1/4" TAMPERPROOF FASTENERS
10	3	STAINLESS STEEL 316	90 DEG. HOLD OPEN ARM
11	2	ALUMINUM 6061-T6	2" X 1" X 1/8" DRIP CHANNEL TO BE WELDED U/S TREAD PLATE
12	17	ALUMINUM 6061-T6	6mm X 38 CASTIN ANCHOR X 100mm LG.
13	1	ALUMINUM 6061-T6	RECESSED PACLOCK HASP PADLOCK SUPPLIED BY OTHERS
14	1	ALUMINUM 6061-T6	1/4" TREAD PLATE RISER

- NOTE: 1) ALL ALUMINUM SURFACES IN CONTACT WITH CONCRETE SHALL RECEIVE 2 COATS OF BITUMINOUS PAINT.
- 2) WELDING SHALL CONFORM TO CSA W47.2 CSA W59.2
- 3) REINFORCED TO WITHSTAND A LIVE LOAD OF 300 LBS/SQ.FT (14.4 KPa) WITH A MAX. DEFLECTION OF 1/150th OF THE SPAN.
- 4) ALL FASTENERS 316 STAINLESS STEEL
- 5) GAS CYLINDERS WILL BE SUPPLIED SEPARATELY, IT IS VERY IMPORTANT TO INSTALL CYLINDERS (ITEM #8) AFTER CONCRETE HAS SETTLED. CYLINDERS REQ'D WILL DEPEND ON DOOR WEIGHT

PROJECT	<b>LOCATION PROJECT</b>	
CONTRACTOR	<b>CONTRACTOR</b>	
ARCHT/ENGR	<b>ENGINEER</b>	
QTY.	<b>1</b>	PROJECT NO. <b>#</b>

TITLE		<b>ALUMINUM ACCESS HATCH TYPE-MT 1300 X 2700MM TRIPLE DOOR</b>			
NO.	DATE	BY	DATE	DWG. BY	PLNO.
1			##/##	SCJ	CATA
REVISION			SCALE	DWG. NO.	
			NTS		M-4

REGISTERED PROFESSIONAL ENGINEER  
M.H. MA  
MAR.20, 2012  
PROVINCE OF ONTARIO

**REVIEWED**  
VIRTUAL#25434

**VIRTUAL engineers**  
Consulting Engineers

www.vecollective.com  
15 WERTHEIM CRT. # 402 TEL: (905) 707-0704  
RICHMOND HILL, ONTARIO 1-(866) 337-9333  
L4B 3H7 FAX: (905) 707-1604