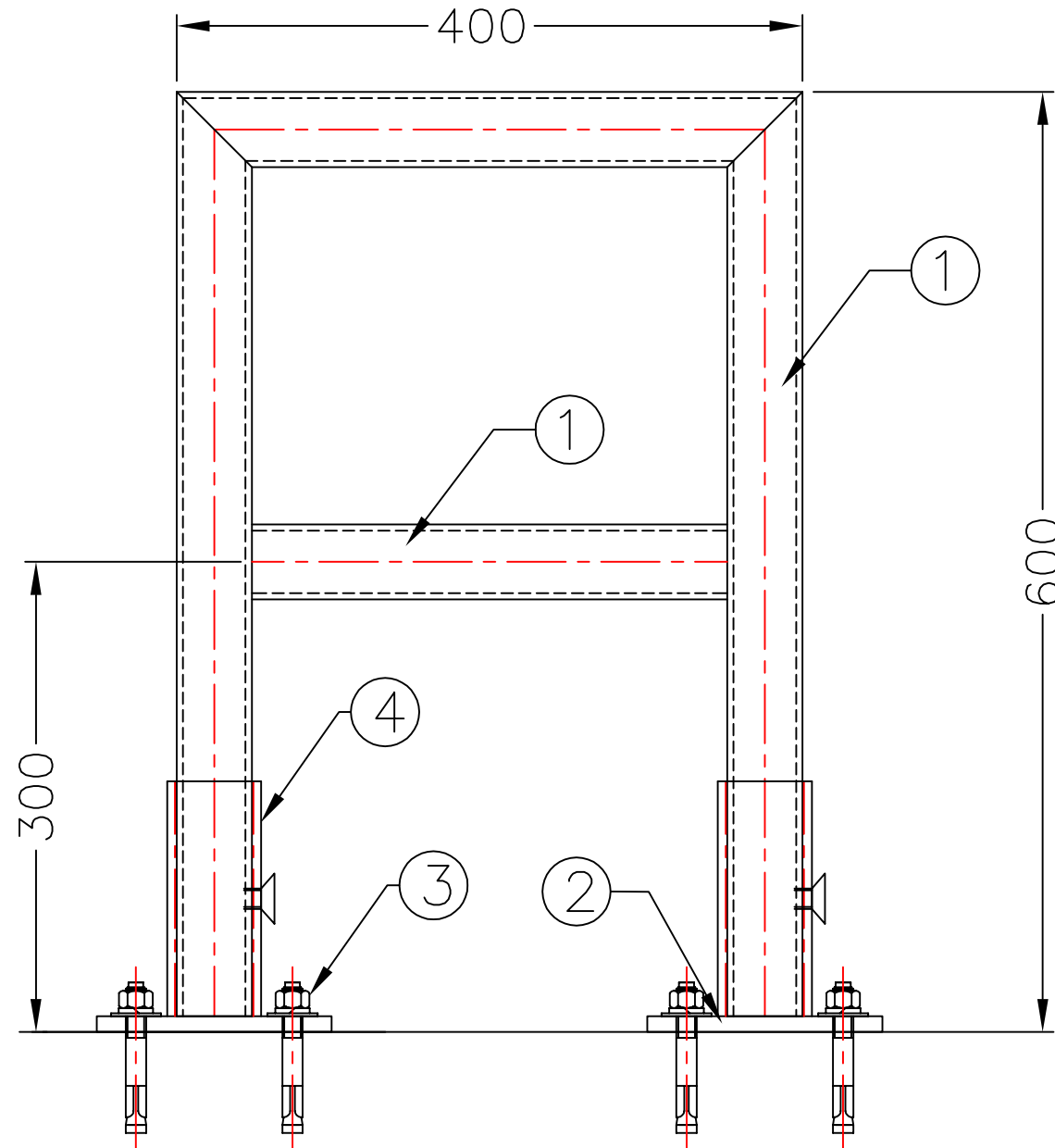
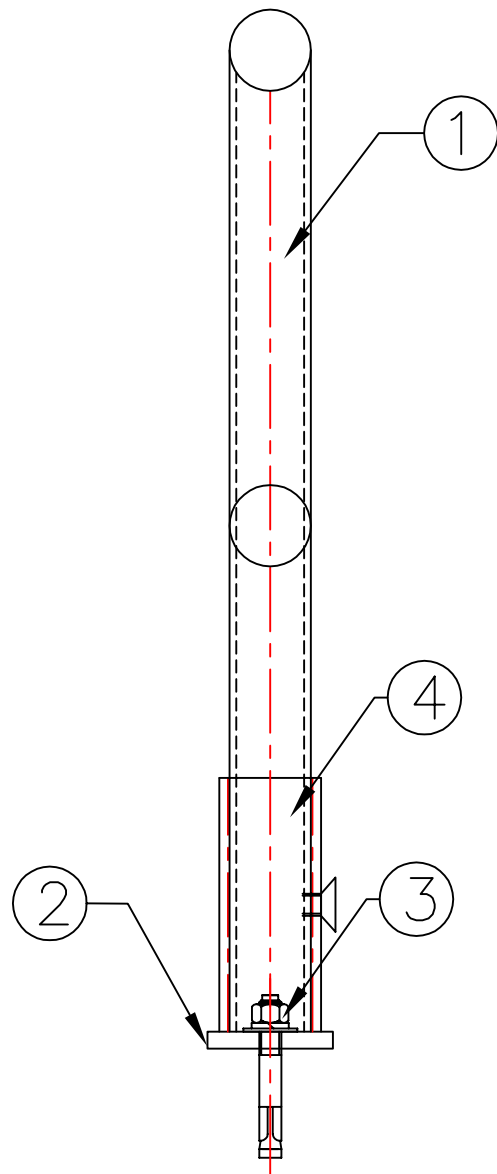
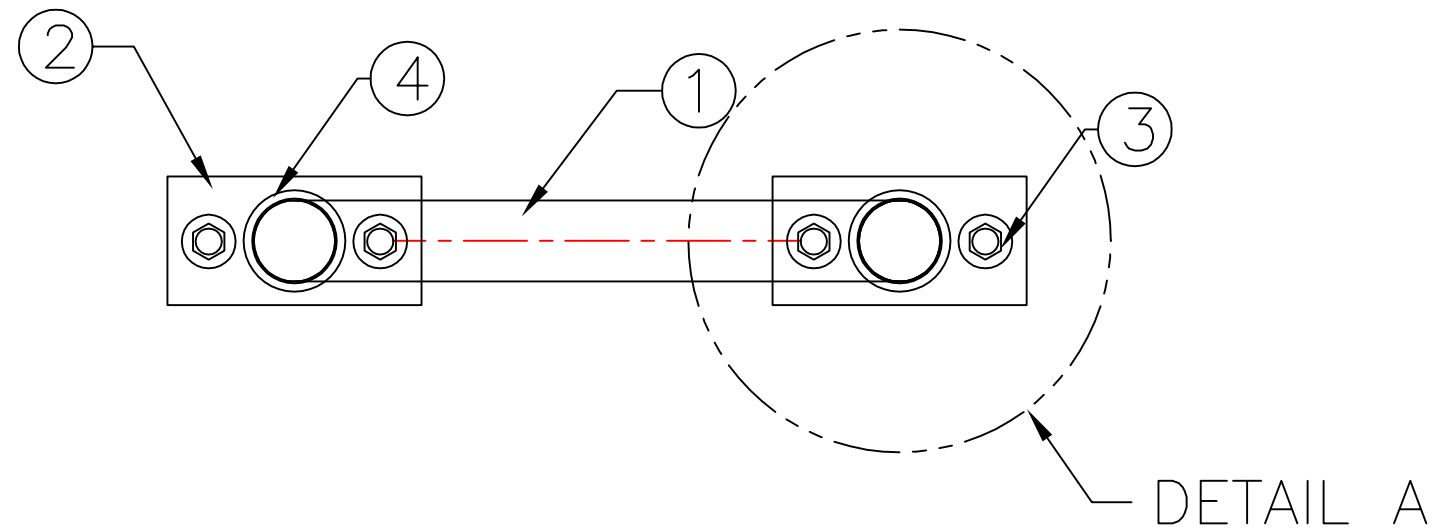


DETAIL A



| # | QTY. | MATERIAL            | DESCRIPTION   |
|---|------|---------------------|---|
| 1 | 4    | ALUMINUM 6061-T6    | 1.5 SCH. 40 PIPE (O.D 48.26mm)                          |
| 2 | 2    | ALUMINUM 6061-T6    | 152 X 76 X 10MM BASE PLAT                               |
| 3 | 4    | STAINLESS STEEL 304 | 1/2 X 3 3/4 WEDGE ANCHOR C/W NUT, FLAT AND LOCK WASHERS |
| 4 | 2    | ALUMINUM 6061-T6    | 2" SCH. 80 PIPE SOCKET C/W 3/8" SET SCREW               |

THIS DOCUMENT CONTAINS PROPRIETARY INFORMATION AND OTHER RIGHTS WHICH ARE THE SOLE AND EXCLUSIVE PROPERTY OF MSU MISSISSAUGA LTD.

POSSESSION OF THIS MATERIAL DOES NOT CONVEY OR TRANSFER ANY RIGHTS THEREIN, AND REPRODUCTION, USE, COPYING OR DISCLOSURE TO OTHERS IS FORBIDDEN WITHOUT THE PRIOR WRITTEN CONSENT OF AN OFFICER OF MSU MISSISSAUGA LTD.

© MSU MISSISSAUGA LTD. - JULY 23RD, 2014

- NOTE: 1) ALL ALUMINUM SURFACES IN CONTACT WITH CONCRETE SHALL RECEIVE 2 COATS OF BITUMINOUS PAINT.  
 2) WELDING SHALL CONFORM TO CSA W47.2 & CSA W59.2  
 3) GROUND ROUGH EDGES SMOOTH.

|            |               |
|------------|---------------|
| PROJECT    | LOCATION      |
| CONTRACTOR | PROJECT       |
| ARCHT/ENGR | CONTRACTOR    |
| QTY.       | ENGINEER      |
| #          | PROJECT NO. # |

|                   |       |           |           |          |         |
|-------------------|-------|-----------|-----------|----------|---------|
| TITLE             |       |           |           |          |         |
| ALUMINUM GRAB BAR |       |           |           |          |         |
| NO.               | DATE  | BY        | DATE      | DWG. BY: | PL. NO. |
| 1                 |       |           | ###/##/## | SCJ      | CATA    |
| REVISION          | SCALE | CHK'D BY: | DWG. NO.  |          |         |
|                   | NTS   |           | GRAB-3    |          |         |