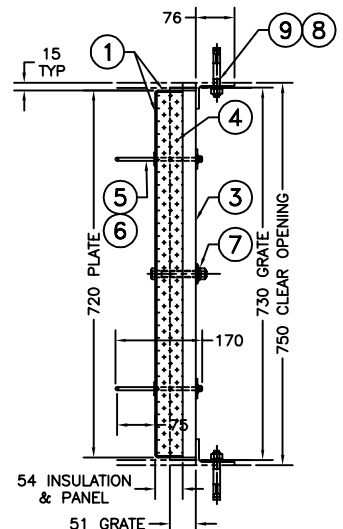
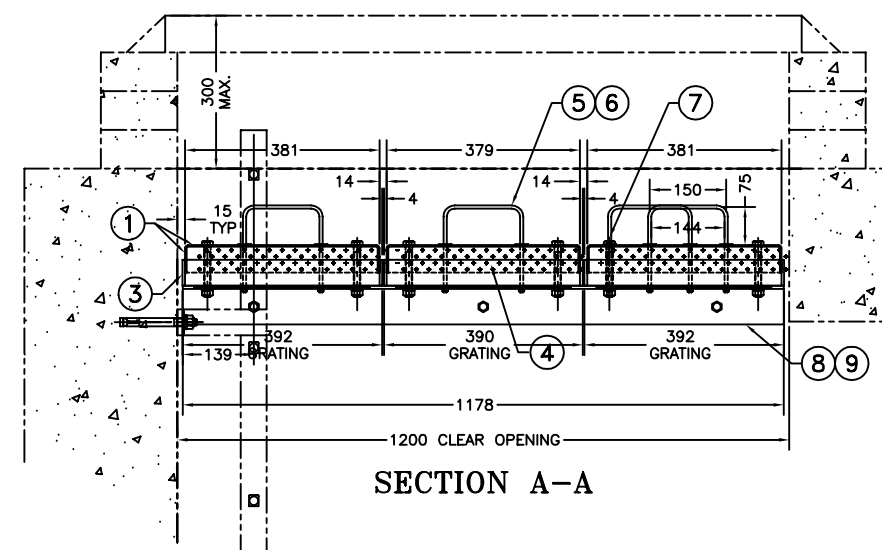


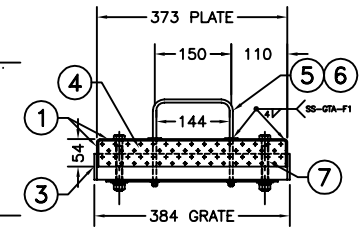
PANEL LAYOUT



SECTION B-B



SECTION A-A



SECTION C-C

**MSU**  
**MISSISSAUGA LTD.**  
 PHONE: (905) 823-4340  
 WATTS: (800) 268-5336  
 WEBSITE: [www.msumississauga.com](http://www.msumississauga.com)

#	QTY.	MATERIAL	DESCRIPTION
1	3	ALUM. CSA H5A 6061-T6	3mm THK. BENT PLATE c/w WELDED CORNERS
2	9	ALUM. CSA H5A 6061-T6	3mm THK. FLAT BAR
3	3	ALUM. CSA H5A 6351-T6	GRATING B#4 25mm c/w 51x5mm BANDING ON 4 SIDES
4	3	POLYSTYRENE INSULATION	50mm STYROFOAM SM EXTRUSION
5	6	STAINLESS STEEL 304	6.4mm# ROD FORMED LIFTING HANDLE TO BE THREADED BOTH ENDS c/w NUT, FLAT & LOCK WASHERS
6	12	STAINLESS STEEL 304	#25mm WASHER SPOT WELD TO HANDLE AS DETAILED
7	18	STAINLESS STEEL 304	1/4" X 4" BOLT c/w FLAT NUT AND LOCK WASHER
8	2	ALUM. CSA H5A 6061-T6	L 76x50x6.4 SUPPORT ANGLE
9	6	STAINLESS STEEL 304	1/2"x3 3/4" WEDGE ANCHOR c/w NUT, FLAT & LOCK WASHER

THIS DOCUMENT CONTAINS PROPRIETARY INFORMATION AND OTHER RIGHTS WHICH ARE THE SOLE AND EXCLUSIVE PROPERTY OF MSU MISSISSAUGA LTD.  
 POSSESSION OF THIS MATERIAL DOES NOT CONVEY OR TRANSFER ANY RIGHTS THEREIN, AND REPRODUCTION, USE, COPYING OR DISCLOSURE TO OTHERS IS FORBIDDEN WITHOUT THE PRIOR WRITTEN CONSENT OF AN OFFICER OF MSU MISSISSAUGA LTD.  
 © MSU MISSISSAUGA LTD. - JULY 23RD, 2014

NOTE: 1) ALL ALUMINUM SURFACES IN CONTACT WITH CONCRETE SHALL RECEIVE 2 COATS OF BITUMINOUS PAINT.  
 2) WELDING SHALL CONFORM TO CSA W47.2 & CSA W59.2

PROJECT	PROJECT LOCATION
CONTRACTOR	CONTRACTOR
ARCHT./ENGR	ENGINEER
QTY. 1	PROJECT NO.

TITLE			
<b>MSU TYPE ALUM. REMOVABLE FROST PLUG</b>			
NO.	DATE	BY	DATE
1		SCJ	###/##/##
SCALE	NTS	DWG. NO.	CATA
			FROSTP-3