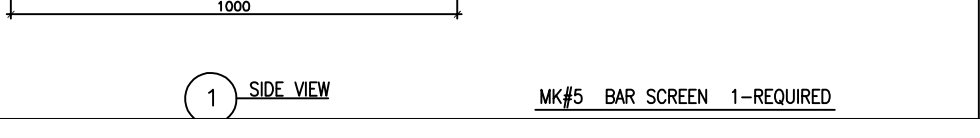
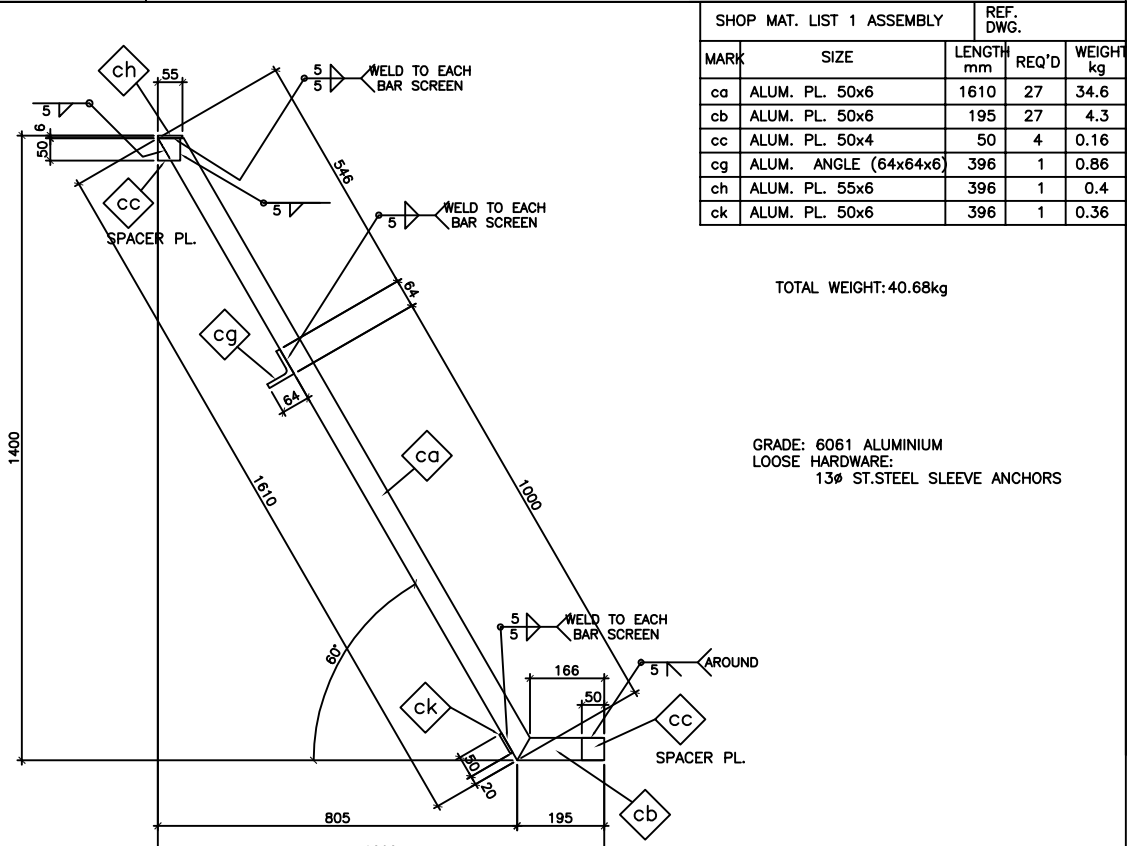
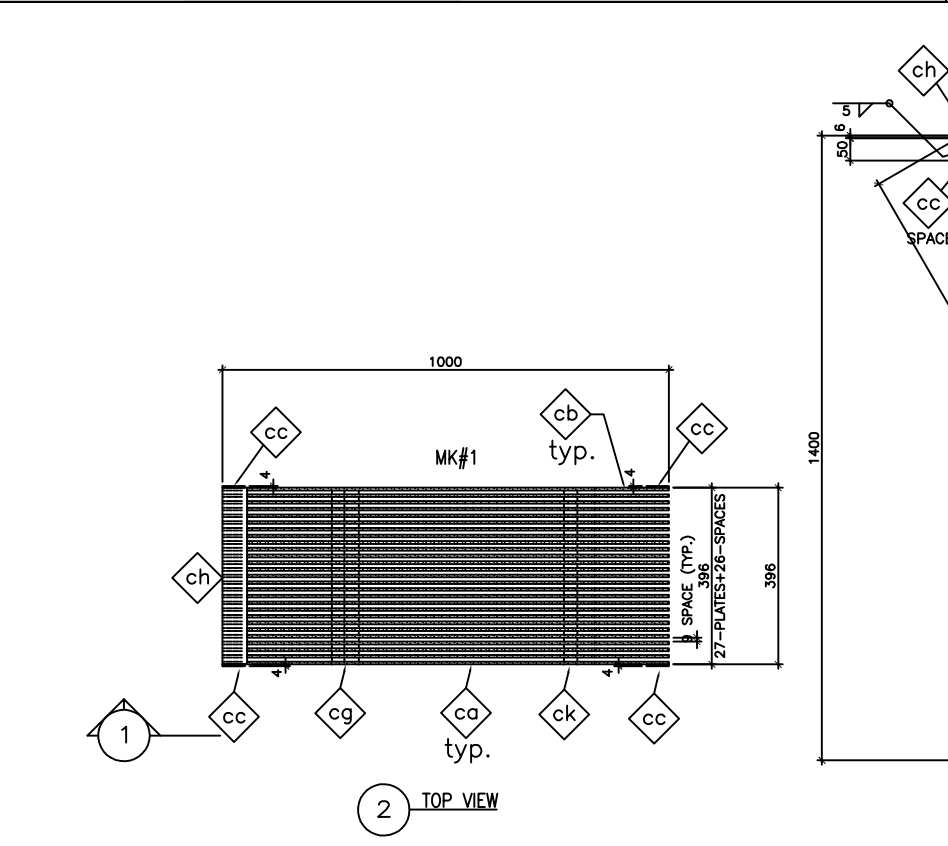


SHOP MAT. LIST 1 ASSEMBLY				REF. DWG.
MARK	SIZE	LENGTH mm	REQ'D	WEIGHT kg
ca	ALUM. PL. 50x6	1610	27	34.6
cb	ALUM. PL. 50x6	195	27	4.3
cc	ALUM. PL. 50x4	50	4	0.16
cg	ALUM. ANGLE (64x64x6)	396	1	0.86
ch	ALUM. PL. 55x6	396	1	0.4
ck	ALUM. PL. 50x6	396	1	0.36

TOTAL WEIGHT: 40.68kg

GRADE: 6061 ALUMINIUM
 LOOSE HARDWARE:
 13# ST. STEEL SLEEVE ANCHORS

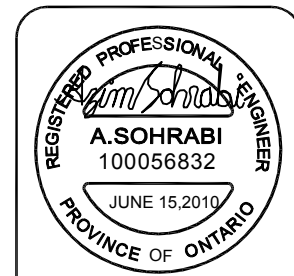


#	QTY.	MATERIAL	DESCRIPTION
---	------	----------	-------------

THIS DOCUMENT CONTAINS PROPRIETARY INFORMATION AND OTHER RIGHTS WHICH ARE THE SOLE AND EXCLUSIVE PROPERTY OF MSU MISSISSAUGA LTD.

POSSESSION OF THIS MATERIAL DOES NOT CONVEY OR TRANSFER ANY RIGHTS THEREIN, AND REPRODUCTION, USE, COPYING OR DISCLOSURE TO OTHERS IS FORBIDDEN WITHOUT THE PRIOR WRITTEN CONSENT OF AN OFFICER OF MSU MISSISSAUGA LTD.

© MSU MISSISSAUGA LTD. - JULY 23RD, 2014



REVIEWED
 VIRTUAL 25314



NOTE: 1. ALL ALUMINIUM SURFACES IN CONTACT WITH CONCRETE SHALL RECEIVE 2 COATS OF BITUMINOUS PAINT.
 2. WELDING SHALL CONFORM TO CSA-W47.2 (R2008) & CSA W59.2 (R2008)
 3. WELDED SURFACES REMAIN AS WELDED.
 4. FOR A 18.8kN/m³ FLUID DENSITY, BLOCKED SCREEN WILL RESIST A HIGH STATIC LEVEL OF MAXIMUM 5.0 METERS.

PROJECT	LOCATION PROJECT
CONTRACTOR	CONTRACTOR
ARCHT/ENG'R	ENGINEER
QTY. 1	PROJECT NO.

TITLE					
ALUMINIUM BAR SCREEN					
NO.	DATE	BY	DATE	DWG. BY:	DWG. NO.
1			##/##/##	SCJ	CATA
			SCALE	CHK'D BY:	BAR-4
			NTS		