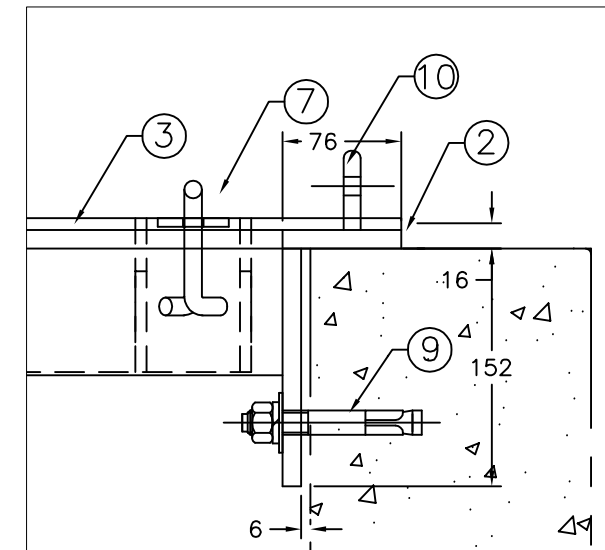
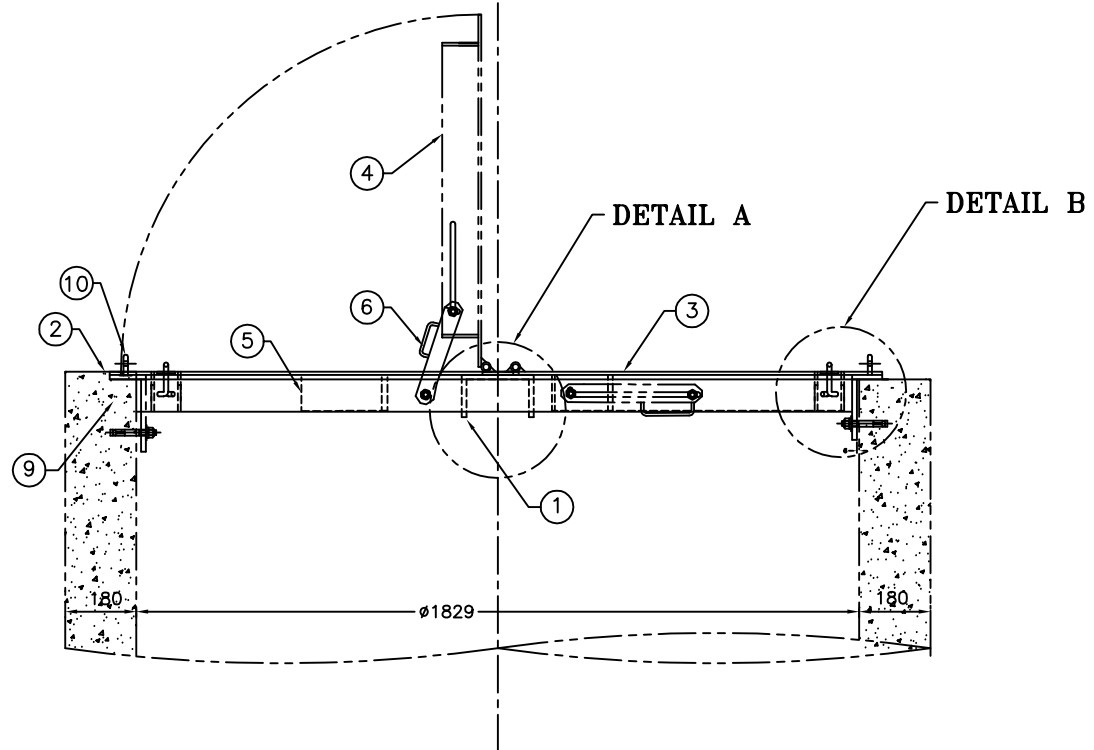


DETAIL A



DETAIL B

#	QTY.	MATERIAL	DESCRIPTION
1	1	ALUM. 6061-T6	152X89X10mm CHANNEL SUPPORT WELD TO ITEM #2
2	1	ALUM. 6061-T6	1-76X10&1-152x10mm F.B. FRAME ROLLED AND WELDED CONSTRUCTION
3	3	ALUM. 6061-T6	6.35mm TREAD PLATE
4	12	ALUM. 6061-T6	76 X 6mm REINFORCING FLAT BAR
5	4	ALUM. 6061-T6	76 X 10mm FLAT BAR FRAME 76 X 13mm FLAT BAR
6	2	STAINLESS STEEL 304	90° HOLD OPEN ARM
7	2	ALUM. 6061-T6	RECESSED ROD FORMED HANDLE C/W WELDED UNDERSIDE BOX
8	8	ALUM. 6061-T6	WELD ON HINGES
9	14	STAINLESS STEEL 304	12#X95mm WEDGE ANCHORS C/W NUT, FLAT & LOCK WASHERS
10	2	ALUM. 6061-T6	LOCK TAB

THIS DOCUMENT CONTAINS PROPRIETARY INFORMATION AND OTHER RIGHTS WHICH ARE THE SOLE AND EXCLUSIVE PROPERTY OF MSU MISSISSAUGA LTD.

POSSESSION OF THIS MATERIAL DOES NOT CONVEY OR TRANSFER ANY RIGHTS THEREIN, AND REPRODUCTION, USE, COPYING OR DISCLOSURE TO OTHERS IS FORBIDDEN WITHOUT THE PRIOR WRITTEN CONSENT OF AN OFFICER OF MSU MISSISSAUGA LTD.

© MSU MISSISSAUGA LTD. - JULY 23RD, 2014

NOTE: 1) ALL ALUMINUM SURFACES IN CONTACT WITH CONCRETE SHALL RECEIVE 2 COATS OF BITUMINOUS PAINT.
 2) WELDING SHALL CONFORM TO CSA W47.2-M1987 CSA W59.2-M1991
 3) HATCH HAS BEEN DESIGNED TO WITHSTAND 300 LBS./SQ. FT. LIVE LOAD

PROJECT	LOCATION PROJECT
CONTRACTOR	CONTRACTOR
ARCHT/ENGR	ENGINEER
QTY.	PROJECT NO.
1	#

TITLE						MSU ALUM. 2 DOOR CIRCLE HATCH FOR 1829mm (72") DIA. MANHOLE	
NO.	DATE	BY	DATE	DWG. BY:	P.L. NO.	CATA	
1			##/##/##	SCJ		AL-2	
SCALE				DESIGNED BY:		DWG. NO.	
NTS						AL-2	