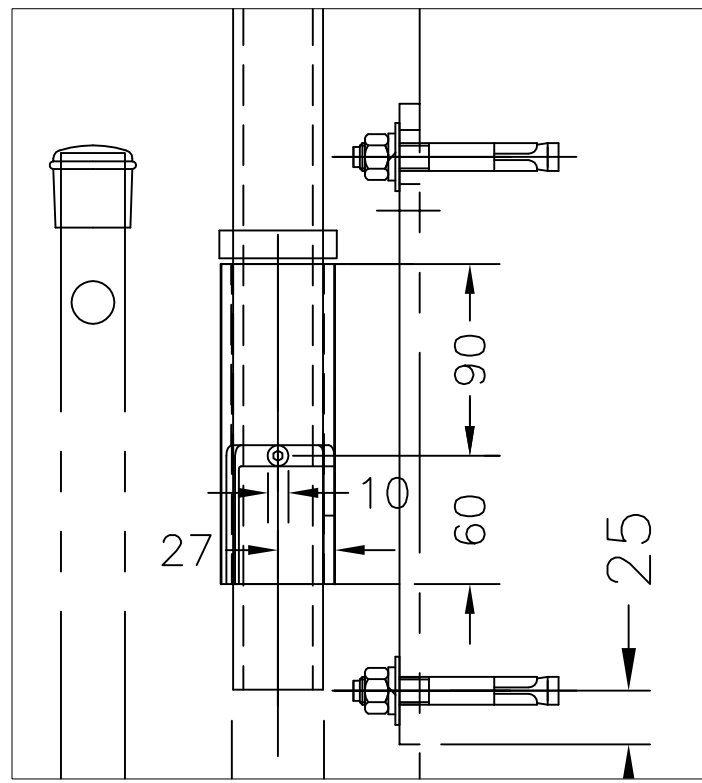


TYPICAL APPLICATION  
 ACCESS TO LADDER FROM ABOVE  
 THRU COVER WHERE POST  
 IS RETRACTED UPWARD  
 PRIOR TO DESCENT

LADDER BRACKETS NOT SHOWN FOR CLARITY



HANDLE INSERTION DETAIL

#	QTY.	MATERIAL	DESCRIPTION
1	1	STAINLESS STEEL 316	2" .120 WALL TUBE - SOCKET WELD TO 3/8" X 2" X 12" FB
2	1	STAINLESS STEEL 316	1 1/4" SCH. 10 IPS PIPE 1420mm LG.
3	1	STAINLESS STEEL 316	3/4" SCH 40 PIPE
4	2	BLACK POLYETHYLENE	END CAP
5	2	STAINLESS STEEL 316	1/2"x3 3/4" WEDGE ANCHOR c/w NUT, FLAT & LOCK WASHER
6	1	GREY POLYETHYLENE	TOP CAP
7	1	STAINLESS STEEL 316	5/16" X 3/4" SOCKET HEAD SCREW C/W NYLON INSERT LOCK NUT

THIS DOCUMENT CONTAINS PROPRIETARY INFORMATION AND OTHER RIGHTS WHICH ARE THE SOLE AND EXCLUSIVE PROPERTY OF MSU MISSISSAUGA LTD.

POSSESSION OF THIS MATERIAL DOES NOT CONVEY OR TRANSFER ANY RIGHTS THEREIN, AND REPRODUCTION, USE, COPYING OR DISCLOSURE TO OTHERS IS FORBIDDEN WITHOUT THE PRIOR WRITTEN CONSENT OF AN OFFICER OF MSU MISSISSAUGA LTD.

© MSU MISSISSAUGA LTD. - JULY 23RD, 2014

1) WELDING SHALL CONFORM TO CSA W47.1 & AWS D1.6

PROJECT	LOCATION
CONTRACTOR	PROJECT
ARCHT/ENGR	CONTRACTOR
QTY.	ENGINEER
#	PROJECT NO. #

TITLE					
<b>MODEL #3600 PERMANENT 'T' HANDLE WALL MOUNT</b>					
NO.	DATE	BY	DATE	DWG. BY:	PL. NO.
1			##/##	SCJ	CATA
SCALE	NTS		CHK'D BY:	DWG. NO. 3600-2	