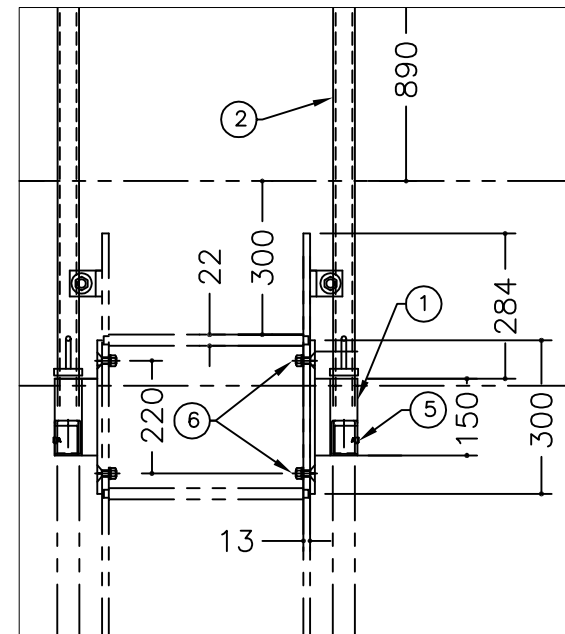


PLAN VIEW



DETAIL A

**MSU
MISSISSAUGA LTD.**

PHONE: (905) 823-4340

WATTS: (800) 268-5336

WEBSITE: www.msumississauga.com

#	QTY.	MATERIAL	DESCRIPTION
1	2	CSA HA5 ALUM 6351-T6	BOLT ON SOCKET ALUMINUM EXTRUSION # 8447
2	2	CSA HA5 ALUM 6061-T6	1 1/4" SCH 80 IPS PIPE [1.66 OD.] 1420mm LONG
3	2	CSA HA5 ALUM 6061-T6	2"φ END PIECE
4	2	STAINLESS STEEL 304	3/8"φ EYE BOLT
5	2	STAINLESS STEEL 304	5/16" X 3/4" SOCKET HEAD SCREW C/W NYLON INSERT LOCK NUT
6	4	STAINLESS STEEL 304	1/2"φ X2 1/4" LG. C.S. S.S. BOLT c/w NUT & WASHER

THIS DOCUMENT CONTAINS PROPRIETARY INFORMATION AND OTHER RIGHTS WHICH ARE THE SOLE AND EXCLUSIVE PROPERTY OF MSU MISSISSAUGA LTD.

POSSESSION OF THIS MATERIAL DOES NOT CONVEY OR TRANSFER ANY RIGHTS THEREIN, AND REPRODUCTION, USE, COPYING OR DISCLOSURE TO OTHERS IS FORBIDDEN WITHOUT THE PRIOR WRITTEN CONSENT OF AN OFFICER OF MSU MISSISSAUGA LTD.

© MSU MISSISSAUGA LTD. - JULY 23RD, 2014

NOTE: 1) ALL ALUMINUM SURFACES IN CONTACT WITH STEEL OR CONC. SHALL RECEIVE 2 COATS OF BITUMINOUS PAINT.

2) WELDING SHALL CONFORM TO CSA W47.2 & CSA W59.2

PROJECT	LOCATION
CONTRACTOR	PROJECT
ARCHT./ENGR	CONTRACTOR
QTY.	ENGINEER
#	PROJECT NO. #

TITLE		DUAL MODEL #3100	
BOLT TO OPSD 406.01 LADDER		DWG. BY: scj	
NO.	DATE	BY	DATE
1		scj	##/##/##
SCALE	NTS	DWG. NO.	3100-4
PL#	CATA		