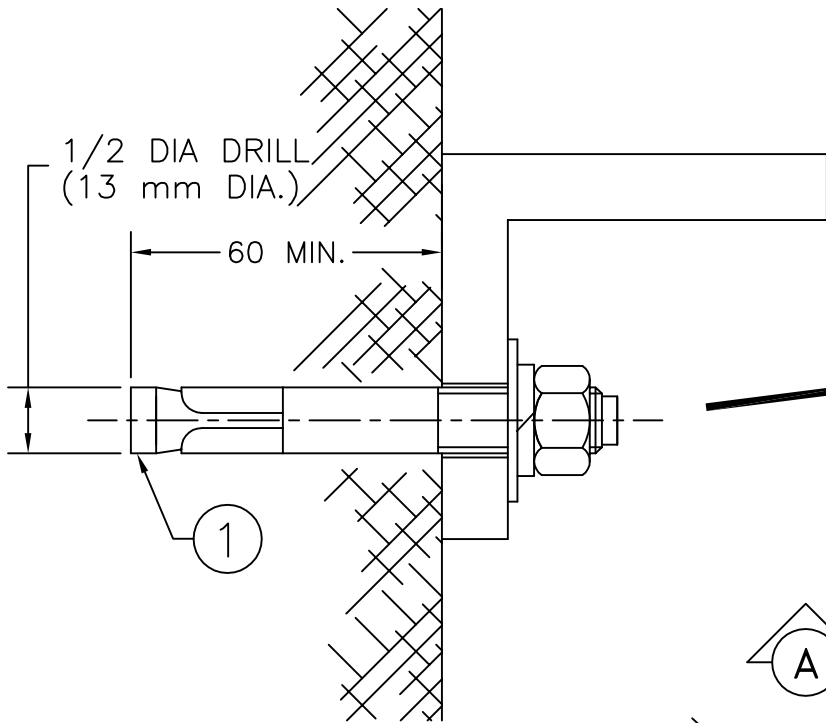
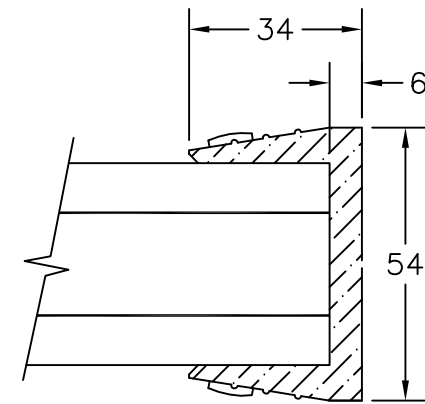
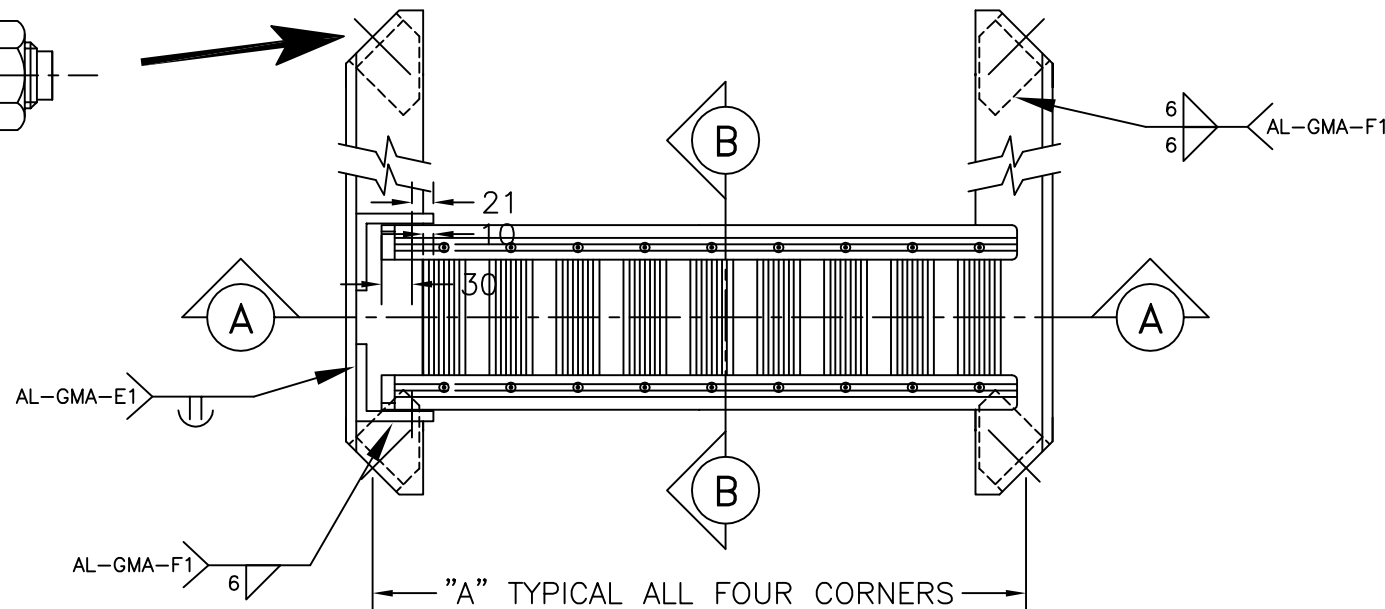


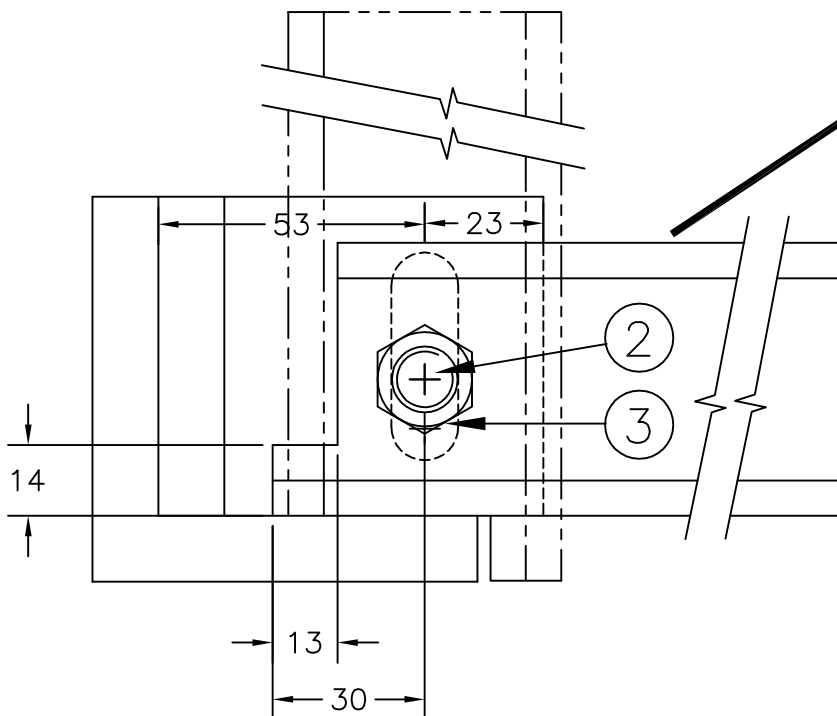
MANHOLE DIA.	A	A
900	[36]	647
1050	[42]	753
1200	[48]	862
1350	[54]	970
1500	[60]	1078
1650	[66]	1186
1800	[72]	1293
2100	[84]	1509
2400	[96]	1724



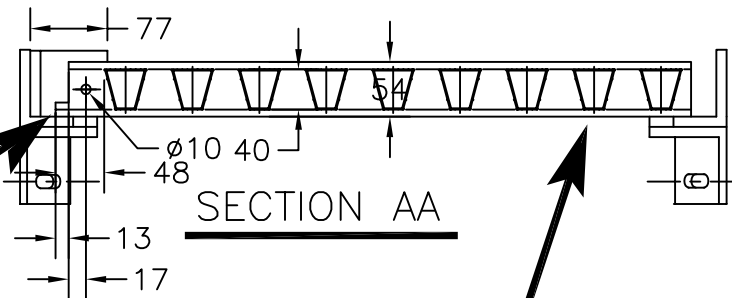
**SAFETY GRATE  
INSTALLATION ASSEMBLY**



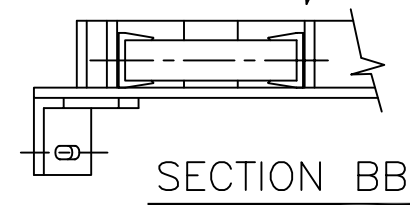
**GRATING SIDE RAIL  
ATTACHMENT DETAIL**



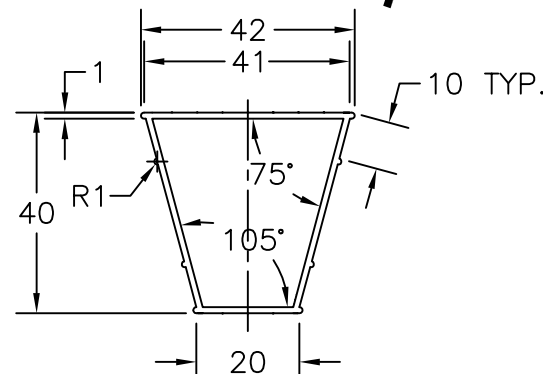
**SELF LOCKING  
DETAIL**



**SECTION AA**



**SECTION BB**



**GRATING RUNG  
DETAIL**

**MSU  
MISSISSAUGA LTD.**

PHONE: (905) 823-4340  
FAX: (905) 823-4947  
WATTS: (800) 268-5336  
website-www.msmississauga.com

#	QTY.	MATERIAL	DESCRIPTION
1	4	STAINLESS STEEL 304	1/2"-13UNC X 3 3/4"LG WEDGE ANCHOR
2	AS REQ.	STAINLESS STEEL 304	1/2"-13UNC X 1 3/4"LG HEX. HEAD BOLT
3	AS REQ.	STAINLESS STEEL 304	1/2"-13UNC LOCKNUT W/NYLON INSERT

- NOTE: 1) ALL ALUMINUM SURFACES IN CONTACT WITH CONCRETE SHALL RECEIVE 2 COATS OF BITUMINOUS PAINT.  
2) WELDING SHALL CONFORM TO CSA W47.2 & CSA W59.2  
3) GROUND ROUGH EDGES SMOOTH. WELDED SUFACES REMAIN AS WELDED.

PROJECT	LOCATION PROJECT	
CONTRACTOR	CONTRACTOR	
ARCHT/ENGR	ENGINEER	
QTY.	PROJECT NO.	#

TITLE <b>MSU MANHOLE SAFETY LANDING MANUFACTURING DETAILS</b>					
NO.	DATE	BY	DATE	DWG. BY	PL. NO.
1	MAR. 7, 1997	JVW		JVW	#
SCALE	NTS		CHK'D BY	DWG. NO.	
				200-2A	